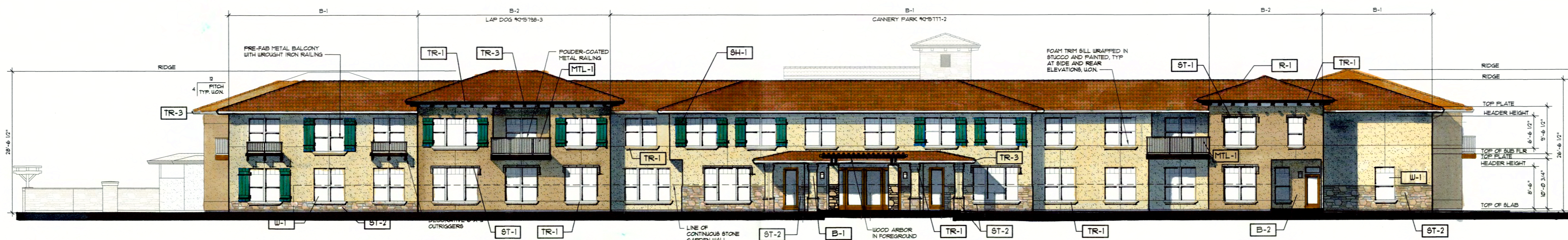


SOUTH ELEVATION (PLEASANT GROVE BLVD.)
SCALE: 3/32" = 1'-0"



EAST ELEVATION
SCALE: 3/32" = 1'-0"



NORTH ELEVATION (FUTURE DUNHAM DRIVE)
SCALE: 3/32" = 1'-0"



WEST ELEVATION (VILLAGE CENTER DRIVE)
SCALE: 3/32" = 1'-0"

COLOR AND MATERIAL SCHEDULE			
FINISH TAG	SUBJECT	MANUFACTURER/MATERIAL	COLOR
R-1	ROOF	1/2" TYPE PENSION STYLE CLAY ROOF TILES	'OLD WORLD BLEND'
B-1	BODY	'EXTERIOR STUCCO FINISH' 2000 SAND FINISH	'NELLY MOORE' CANNERY PARK #05111-2
B-2	BODY	'EXTERIOR STUCCO FINISH' 2000 SAND FINISH	'NELLY MOORE' LAP DOG #05158-3
TR-1	TRIM	MATERIAL VARIES SEE ELEVATIONS FOR DETAIL KEYS AND CALL-OUTS	'NELLY MOORE' BUNN CORP #13
TR-3	TRIM	MATERIAL VARIES SEE ELEVATIONS FOR DETAIL KEYS AND CALL-OUTS	'NELLY MOORE' ACCI-S VENEERS #15
U-1	WINDOWS	VINYL FRAMES	ALMOND INSIDE ALMOND OUTSIDE
MTL-1	WROUGHT IRON	MANUFACTURER VARIES	ALL WROUGHT IRON TO BE POWDER COATED COLOR FLAT BLACK
ST-1	CAST STONE TRIM	EL DORADO STONE	CAST STONE TO MATCH KELLY MOORE 'NAVADO WHITE 9M'
ST-2	STONE VENEER	EL DORADO STONE	CASCADE MOUNTAIN LEASE W/ 'TRACANY COUNTRY' RUBBLE GROUP, RAISED JOINTS, RUBBLE COLOR, SHADE COLOR #4002
SH-1	SHUTTERS	SLATRIC PREMIUM SHUTTERS	#01 DEEP SEA BLUE

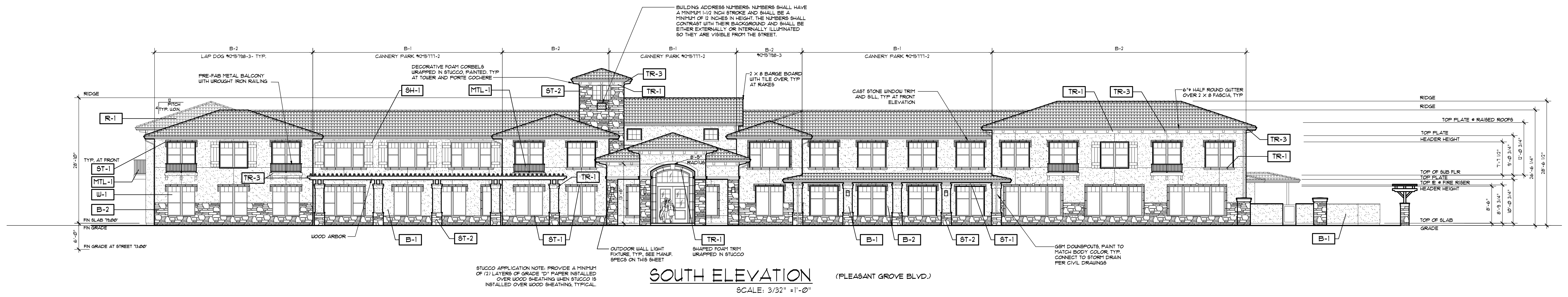
ALI IGBAL
3240 OLD REDWOOD HUNY, STE. 200
LINDSBOR, CA 95432
PH: 707-595-3200

OAKMONT
Senior Living

EXTERIOR ELEVATIONS
OAKMONT OF WESTPARK
2400 TOWN CENTER DRIVE, ROSEVILLE, CA

JOB NO:
SCALE:
AS SHOWN
DRAIN BY:
DATE: MAY 3 2011
COPYRIGHT
REVISIONS:
JULY 2011

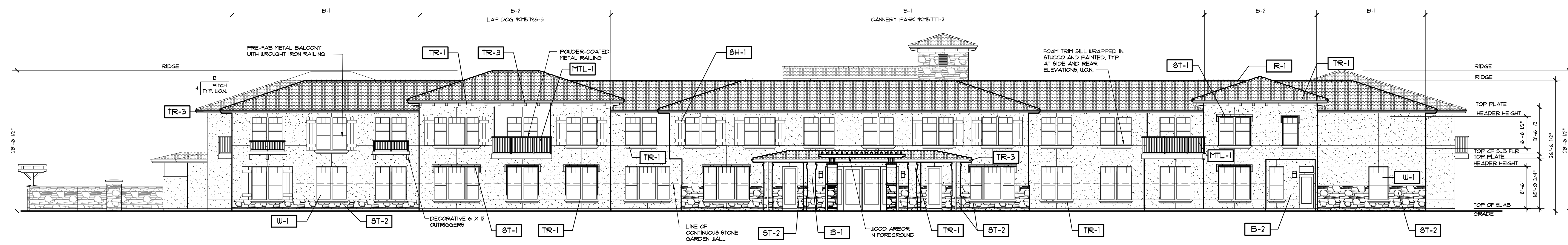
SHEET NO:
A1.1



SOUTH ELEVATION (PLEASANT GROVE BLVD.)
SCALE: 3/32" = 1'-0"



EAST ELEVATION
SCALE: 3/32" = 1'-0"



NORTH ELEVATION (FUTURE DUNHAM DRIVE)
SCALE: 3/32" = 1'-0"



WEST ELEVATION (VILLAGE CENTER DRIVE)
SCALE: 3/32" = 1'-0"

COLOR AND MATERIAL SCHEDULE			
FINISH TAG	SUBJECT	MANUFACTURER/MATERIAL	COLOR
R-1	ROOF	36" TILT 1/2" PITCH TRUSS STYLE GLAY ROOF TILES	'OLD WORLD BLEND'
B-1	BODY	'EXTERIOR STUCCO FINISH' 20/80 SAND FINISH	'KELLY MOORE' CANNERY PARK #05111-2
B-2	BODY	'EXTERIOR STUCCO FINISH' 20/80 SAND FINISH	'KELLY MOORE' LAP DOG #05198-3
TR-1	TRIM	MATERIAL VARIES SEE ELEVATIONS FOR DETAIL KEYS AND CALL-OUTS	'KELLY MOORE' SUBS COPPER #3
TR-3	TRIM	MATERIAL VARIES SEE ELEVATIONS FOR DETAIL KEYS AND CALL-OUTS	'KELLY MOORE' ACIR-8 VENEER'S FIELDS
W-1	WINDOWS	VINYL FRAMES	ALMOND INSIDE ALMOND OUTSIDE
MTL-1	WROUGHT IRON	MANUFACTURER VARIES	ALL WROUGHT IRON TO BE POWDER COATED COLOR: FLAT BLACK
ST-1	CAST STONE TRIM	EL DORADO STONE	CAST STONE TO MATCH 'KELLY MOORE' 'WALDO WHITE 56"
ST-2	STONE VENEER	EL DORADO STONE	CASCADE RUBIC LEDGE W/ TUSCANY COUNTRY MARBLE GROUT RAISED JOINTS GROUT COLOR: 'CAV'S COLORED MARBLE'
SH-1	SHUTTERS	ATLANTIC PREMIUM SHUTTERS	'031 DEEP SEA BLUE

ALL IQBAL
9240 OLD REDWOOD HWY. STE. 200
WOODBRIDGE, CA 94691
PH: 707-938-3300

OAKMONT
Senior Living

EXTERIOR ELEVATIONS
OAKMONT OF WESTPARK
2400 TOWN CENTER DRIVE, ROSEVILLE, CA

JOB NO:
SCALE:
AS SHOWN
DRAWN BY:
DATE: MAY 3 2017
COPYRIGHT
REVISIONS:
JULY 2017

SHEET NO:
A.11